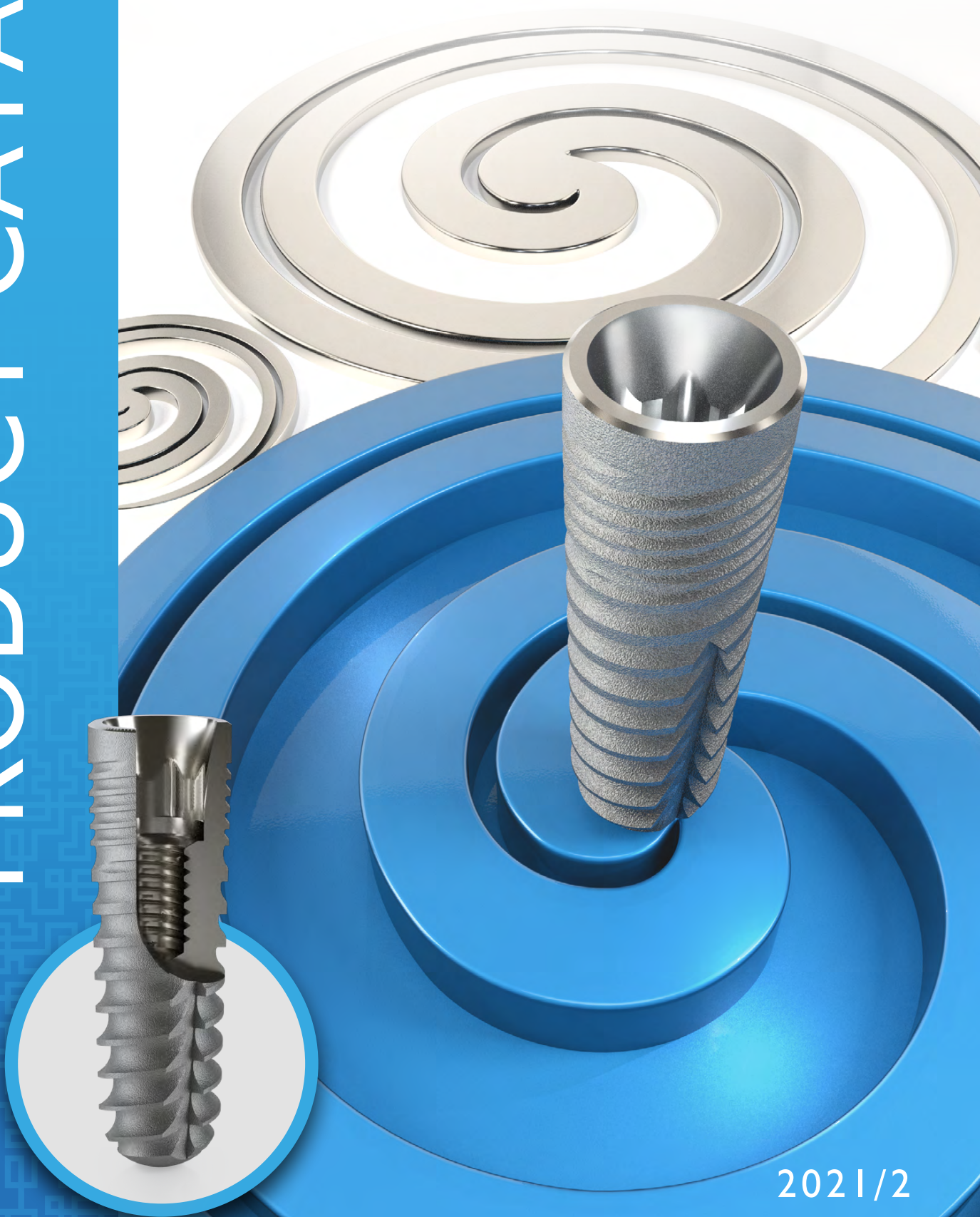


# PRODUCT CATALOG



Implant Solutions



2021/2

# CONTENT

ABOUT CALLUS®.....	3	Ball abutments.....	17
CALLUS PRO™.....	4	Accessories.....	17
Connection.....	4	Dess Loc.....	18
Surface.....	5	DESS Loc Accessories.....	19
Packaging and sterilization.....	6	MULTI-UNIT ABUTMENTS.....	20
Usability.....	7	Multi-unit Abutments.....	20
IMPLANT RANGE.....	8	Multi-unit Accessories.....	21
Callus Pro™ implants.....	8	DIGITAL LABORATORY ACCESSORIES.....	22
PROSTHETICS.....	9	Titanium Bases.....	22
CEMENTED ABUTMENTS.....	10	Angulated Ti Bases (AURUMBase).....	23
Straight & Angled Abutments.....	10	Dental lab and intraoral scan bodies.....	24
Reverse Conical Abutments for angled correction.....	10	LABOR ANALOGUES / SCREWS.....	25
Pre-milled Ti Abutment Blanks.....	11	Analogues.....	25
SCREW RETAINED ABUTMENTS.....	12	Screws.....	25
Chrome Cobalt Interfaces.....	12	GINGIVA FORMERS & IMPRESSION TAKINGS.....	26
Titanium Bases.....	13	Healing Abutments - Standard line.....	26
Angulated Ti Bases (AURUMBase).....	14	Impression Transfers.....	27
AURUMBase® Features & benefits.....	15	SURGICAL TRAY.....	30
TEMPORARY ABUTMENTS.....	16	Surgical instruments.....	30
Titanium Temporary Abutments.....	16	PROSTHETIC TRAY.....	34
REMOVABLE ABUTMENTS.....	16	Prosthetic instruments.....	34
Mini Ball abutments.....	16		



## ABOUT CALLUS®

### Callus Implant Solutions GmbH

designs and manufactures state-of-the-art, technologically advanced and highly sophisticated dental implant solutions. We are giving our best to provide and supply dentists and dental technicians with innovative solutions and advanced knowledge. CALLUS® philosophy is to offer the best value-for-money products. Our implants and prosthetic parts are produced in Germany from well known manufacturers - Gebr. Brassler, GI Implants, Terrats GmbH and others. Ger-

man Quality maintains high demands on quality and service. CALLUS® embraces the technological changes, including the digitalization of the dental world. CALLUS® is providing our customers up-to-date knowledge and products and excellent implantology solutions. CALLUS® products are CE 2409 marked and comply with the highest regulatory requirements.

Welcome to CALLUS® Implant Solutions!

Sincerely yours,  
Team of CALLUS®





# CALLUS PRO™

## Connection

The prosthetic interface of our Callus PRO™ implant is formed by a deep 2x12° conical cone and hexagonal indexing. The deeper conicity provides a superior antimicrobial seal and top stability by narrow platforms, to get a significant platform shift, for high demand esthetic cases. Thanks to its compatibility with a major implant providers connection, our interface is integrated in nearly every cad cam

systems worldwide. The 2x12° cone is the perfect balance between antibacterial seal, stability, platform shift, without difficulties by taking abutment in and out. There is no need for push-out screws or instruments. Two different platform diameters make it possible to produce narrow implants for difficult anatomical situations, by keeping the platform shift noticeable.

### FEATURES

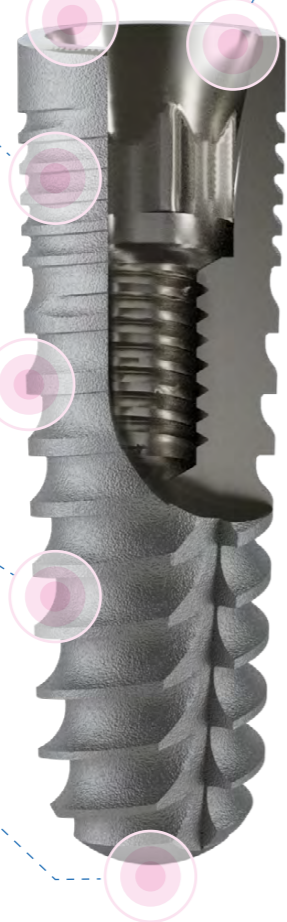
Smooth top around the interface to support the attachment of the biological width

Mini threads to increase primary stability and load

Double thread helix to speed up insertion, by lower stress to the bone

Increasing thread depth to gain primary stability by immediate implant placement and reduce drilling width in the apical area

Round apex to protect anatomical structures and to work better as a bone condenser



2x12° lead in bevel provides perfect stability, antimicrobial seal and a significant platform shift, for superior esthetics. Two different platform diameters for higher variability and narrow implants.

Whole vertical surface is rough to increase load distribution and primary stability, required for early loading

Slightly tapered body placed in undersized parallel osteotomy works as a bone condenser, to gain superb stability also in the soft bone

Universal useable implant geometry in combination with bone density specific drilling protocol

## Surface

Scientific research has proven that achieving a proper implant surface is the key to reaching optimal osseointegration. It has been well documented that surface characteristics of implanted materials highly influence the healing and growth of tissues adjacent to the implant surface.

CALLUS® implants are made of Titanium grade 4\*, a strong, durable and highly biocompatible material.

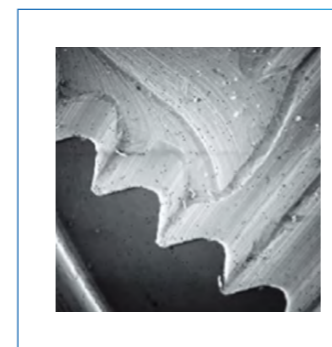
Callus implant surface is of a hybrid type and is achieved through a complex process with particles sandblasting and thermal etching SBTE Active (\*SLA™) for the creation of micropores (sized 2-7 microns). This unique process creates a high surface area differentiation, increases the three-dimensional (3D) surface area and thus, enables a more intense absorption of blood and plasma directly into the implants

micropores immediately after the implant is placed. The microstructure and roughness properties of the implant surface created by the sandblasting and double acid etching process is biocompatible and osseoconductive with immense influence on the initial contact with the host bone.

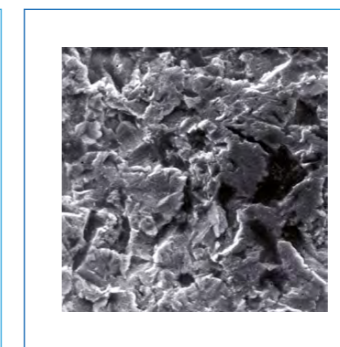
State-of-the-art surface treatment ensures best possible results. CALLUS® surface advantages:

- Accelerated osseointegration process
- Increased secondary stability
- Shortened healing period
- Higher predictability

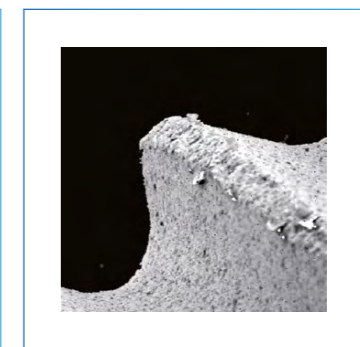
corresponds to the current trends of science



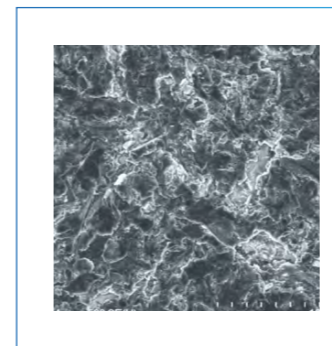
Raw processed surface



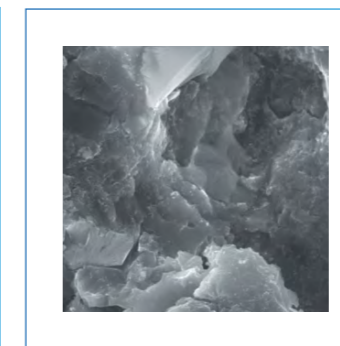
Sand-blasted surface



Passivated surface



Surface microstructure of Callus® implants (MPS, SEM 500x)



Surface microstructure of Callus® implants (MPS, SEM 10.000x)

Material  
Callus® IMPLANTS  
MADE OF UNALLOYED,  
PURE TITANIUM  
(Grade 4)

\*Grade 4 Titanium: T60 commercial pure - Grade 4 T60 commercially pure titanium meets the requirements of ISO 5832-2 and the American Society for Testing and Materials (ASTM F67 3.7065)

\*SLA™ (Institut Straumann AG's trademark)



## Packaging and sterilization

All components have double safety packaging, one external and one internal (thermo sealed) part. Titanium implants are sterilized with gamma irradiation. The sterility is assured for 5 years.

### The package contains:

- instructions for use
- guidance for insertion
- guidance for prosthetic procedures
- guidance for impression taking
- detachable labels (LOT number and bar code for unique identification)

All Callus® Implants can be traced back according to product name and LOT number, which can be found on both the outer and the inner packaging. Please keep the self-adhesive barcode labels.



## Usability



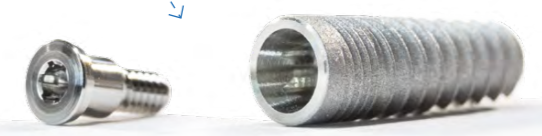
THE EXTERNAL PACKAGING



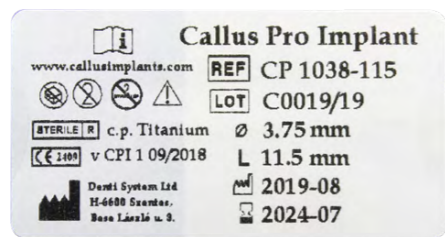
THE INTERNAL PACKAGING



REDESIGNED,  
DOUBLE STERILE PACKAGING  
  
INNOVATION  
ENVIRONMENTAL AWARENESS



LABEL



LABEL LEGEND

Manufacturer	Sterilized using irradiation
Use-by date	Do not resterilize
Date of manufacture (year, month)	Do not use if package is damaged
Size: Diameter (mm)	Keep away from sunlight
Size: length (mm)	Keep dry
Batch code (lot number)	Consult instructions for use
Catalogue number (reference number)	Caution
CE mark	Rx only United States Federal law restricts medical devices to sale by or on the order of a licensed healthcare practitioner
Do not reuse	

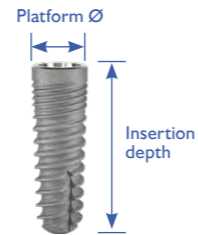


# IMPLANT RANGE

## Callus Pro™ implants

Medical Grade 4 / Pure Titanium

Universal perio-friendly implant with digital ready conical connection. Mount free packaging with cover screw included. Four diameters, with two prosthetic platforms.



healing screws

C1000-160



C2000-160

Callus Implants Ø 3,3 mm		
Reference No.	Insertion depth (mm)	Platform Ø (mm)
CP 1033-100	10,0	3,3
CP 1033-115	11,5	3,3
CP 1033-130	13,0	3,3

Callus Implants Ø 3,75 mm		
Reference No.	Insertion depth (mm)	Platform Ø (mm)
CP 1038-085	8,5	3,75
CP 1038-100	10,0	3,75
CP 1038-115	11,5	3,75
CP 1038-130	13,0	3,75
CP 1038-160	16,0	3,75



Callus Implants Ø 4,2 mm		
Reference No.	Insertion depth (mm)	Platform Ø (mm)
CP 1042-070	7,0	4,2
CP 1042-085	8,5	4,2
CP 1042-100	10,0	4,2
CP 1042-115	11,5	4,2
CP 1042-130	13,0	4,2
CP 1042-160	16,0	4,2

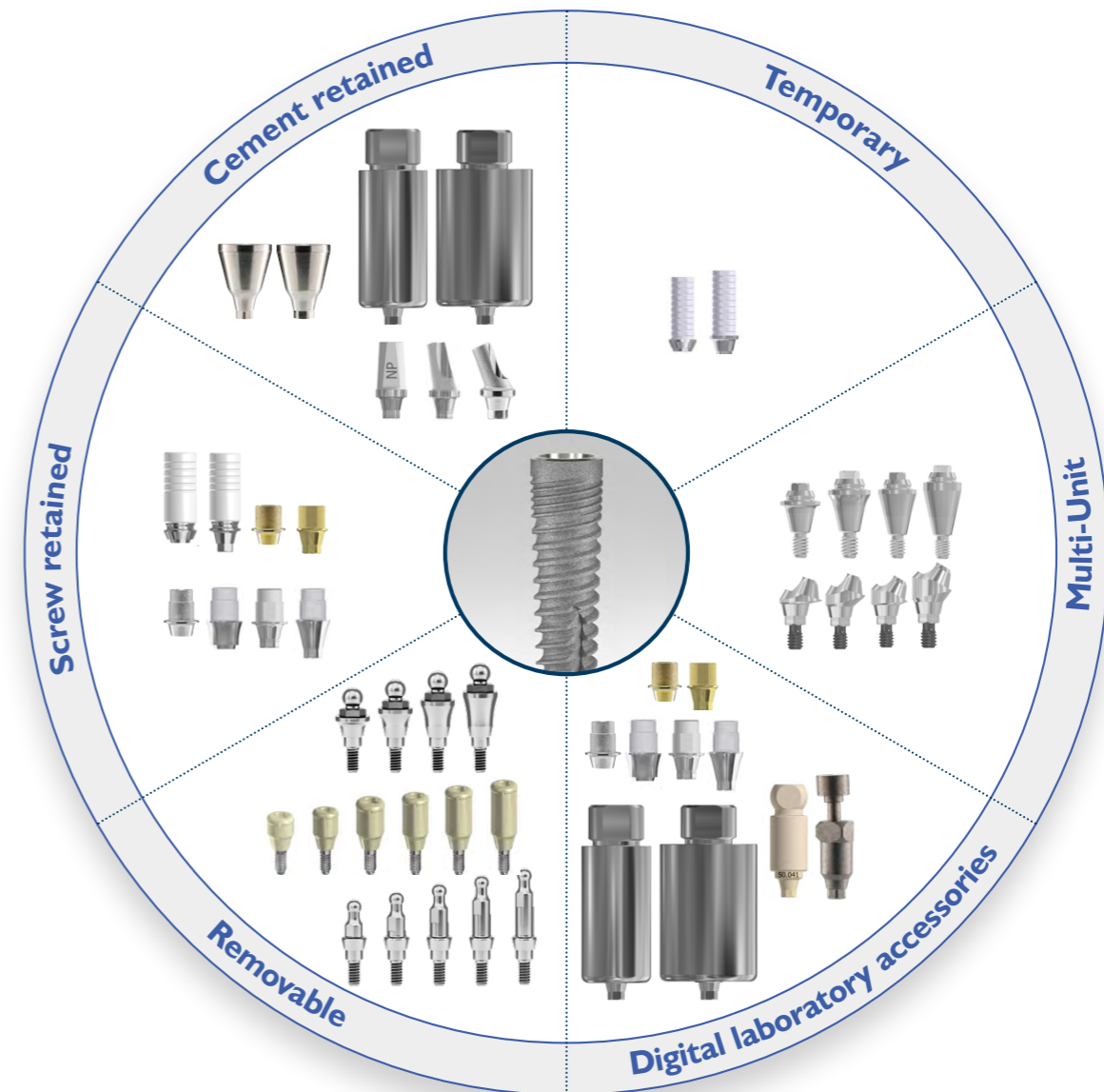
Callus Implants Ø 4,8 mm		
Reference No.	Insertion depth (mm)	Platform Ø (mm)
CP 1048-070	7,0	4,8
CP 1048-085	8,5	4,8
CP 1048-100	10,0	4,8
CP 1048-115	11,5	4,8
CP 1048-130	13,0	4,8



Implant sizes are nominal. For the exact dimensions, please check our manuals to avoid damage of anatomical structures. About surgical- and prosthetic compatibility, ask your local dealer or sales representative.

# PROSTHETICS

Callus Implants is going to provide you integration in third party digital dental systems. Our vision is that digitally designed prosthetics will be the future of predictable implantology. To have up to 100% of early implant survival is the past. The issue is the longterm success and health of periimplantal tissues. Our opinion is, that the right answer is the custom made emergency profile of the prosthetics and if possible, the elimination of cementation.

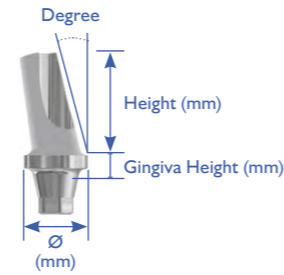


# CEMENTED ABUTMENTS

## Straight & Angled Abutments

Medical Grade 5 ELI Titanium / ASTM F136 Standards

SelectGrip® surface improves cement retention.  
2mm straight preparable collar.  
Final titanium screw included.



Straight & Angled Abutments							
Reference No.	Implant Ø (mm)	Height (mm)	Gingiva height (mm)	Ø (mm)	Screw	De-gree	
NARROW	CP 13.041	3,3; 3,75	9	2	4,5	CP 19.027	0°
	CP 22.041	3,3; 3,75	9	2	4,5	CP 19.027	15°
	CP 13.043	3,3; 3,75	11	4	4,5	CP 19.027	0°
	CP 13.045	3,3; 3,75	13	6	4,5	CP 19.027	0°
	CP 13.042	4,2; 4,8	9	2	4,9	CP 19.030	0°
REGULAR	CP 22.042	4,2; 4,8	9	2	4,9	CP 19.030	15°
	CP 23.042	4,2; 4,8	8,5	2	4,9	CP 19.030	25°
	CP 13.044	4,2; 4,8	11	4	4,9	CP 19.030	0°
	CP 13.046	4,2; 4,8	13	6	4,9	CP 19.030	0°



## Reverse Conical Abutments for angled correction

Medical Grade 5 ELI Titanium / ASTM F136 Standards

2mm straight preparable collar.  
Final titanium screw included.

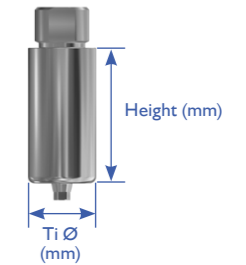


Reverse Conical Abutments for angled correction			
Reference No.	Implant Ø (mm)	Height (mm)	Screw
N CP 13.671	3,3; 3,75	8,0	CP 19.027
R CP 13.672	4,2; 4,8	8,0	CP 19.030

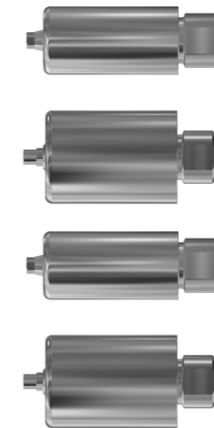


## Pre-milled Ti Abutment Blanks

The ultimate solution to fabricate custom made one piece Ti abutments with individual emergence profile. The fit of connection is factory made precise.



Pre-milled Ti abutment blank					
Reference No.	Implant Ø (mm)	Height (mm)	Ti Ø (mm)	Screw	
NARROW	CP 61.041	3,3; 3,75	20	10	CP 19.027
	CP 62.041	3,3; 3,75	20	14	CP 19.027
REGULAR	CP 61.042	4,2; 4,8	20	10	CP 19.030
	CP 62.042	4,2; 4,8	20	14	CP 19.030



The pre-milled blanks are a reference of a wise and reliable solution:

The materials used are the finest Titanium Grade V ELI (extra low interstitial) or also called Grade 23. Maximize soft tissue attachment by creating individual emergence profile. Pre-milled blank is the smartest solution, to create custom made, one-piece Titanium abutments. Blank holders are available for different types of dental milling machines.





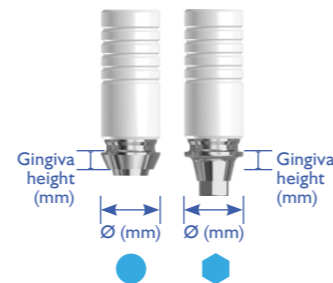
# SCREW RETAINED ABUTMENTS

## Chrome Cobalt Interfaces

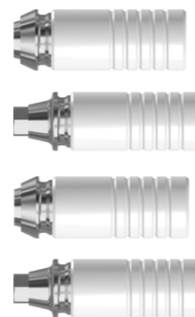
CoCr

Includes wax up sleeve and final prosthetic screw.

- non-engaging
- ⬡ engaging



Chrome Cobalt Interfaces					
Reference No.	Implant Ø (mm)	Gingiva height (mm)	Ø (mm)	Screw	
<b>CP 30.041</b>	3,3; 3,75	1,2	4,5	CP I9.027	<span style="color: blue;">●</span>
<b>CP 31.041</b>	3,3; 3,75	1,2	4,5	CP I9.027	<span style="color: blue;">⬡</span>
<b>CP 30.042</b>	4,2; 4,8	1,2	4,9	CP I9.030	<span style="color: blue;">●</span>
<b>CP 31.042</b>	4,2; 4,8	1,2	4,9	CP I9.030	<span style="color: blue;">⬡</span>



C-Base					
Reference No.	Implant Ø (mm)	Gingiva height (mm)	Ø (mm)	Screw	
<b>CP 59.041</b>	3,3; 3,75	0,8	3,5	CP I9.027	<span style="color: blue;">⬡</span>
<b>CP 59.041/3</b>	3,3; 3,75	3,0	3,5	CP I9.027	<span style="color: blue;">⬡</span>
<b>CP 59.042</b>	4,2; 4,8	0,8	4,3	CP I9.030	<span style="color: blue;">⬡</span>
<b>CP 59.042/3</b>	4,2; 4,8	3,0	4,3	CP I9.030	<span style="color: blue;">⬡</span>

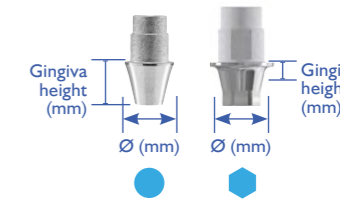


## Titanium Bases

Medical Grade 5 ELI Titanium / ASTM F136 Standards

SelectGrip® surface improves retention.  
Includes wax up sleeve and final prosthetic screw.  
Anti rotational flat side and retentive grooves for greater stability.

- non-engaging
- ⬡ engaging



Titanium Bases					
Reference No.	Implant Ø (mm)	Gingiva height (mm)	Ø (mm)	Screw	
<b>CP 15.041</b>	3,3; 3,75	1,2	4,5	CP I9.027	<span style="color: blue;">●</span>
<b>CP 15.341</b>	3,3; 3,75	3,0	4,5	CP I9.027	<span style="color: blue;">●</span>
<b>CP 16.041</b>	3,3; 3,75	1,2	4,5	CP I9.027	<span style="color: blue;">⬡</span>
<b>CP 16.341</b>	3,3; 3,75	3,0	4,5	CP I9.027	<span style="color: blue;">⬡</span>
<b>CP 15.042</b>	4,2; 4,8	1,2	4,9	CP I9.030	<span style="color: blue;">●</span>
<b>CP 15.342</b>	4,2; 4,8	3,0	4,9	CP I9.030	<span style="color: blue;">●</span>
<b>CP 16.042</b>	4,2; 4,8	1,2	4,9	CP I9.030	<span style="color: blue;">⬡</span>
<b>CP 16.342</b>	4,2; 4,8	3,0	4,9	CP I9.030	<span style="color: blue;">⬡</span>



Castables for Titanium Bases				
Reference No.	Implant Ø (mm)	Height (mm)	Info	
<b>CP 32.001-P5</b>	3,3; 3,75; 4,2; 4,8	11	Pack of 5	<span style="color: blue;">●</span>
<b>CP 33.001-P5</b>	3,3; 3,75; 4,2; 4,8	11	Pack of 5	<span style="color: blue;">⬡</span>

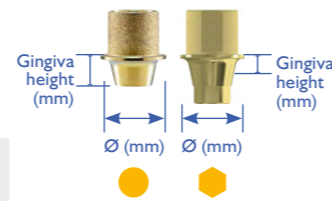


## Angulated Ti Bases (AURUMBase)

Medical Grade 5 ELI Titanium / ASTM F136 Standards

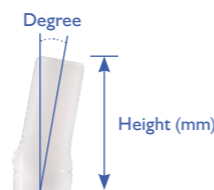
Gold anodized with SelectGrip® surface improves retention.  
Includes final prosthetic Torx™ based screw.  
Up to 25° angulation.  
One Torx™ screw driver for entire system - available in 20-24-35mm lengths.

- non-engaging
- engaging



Angulated Screw Channel

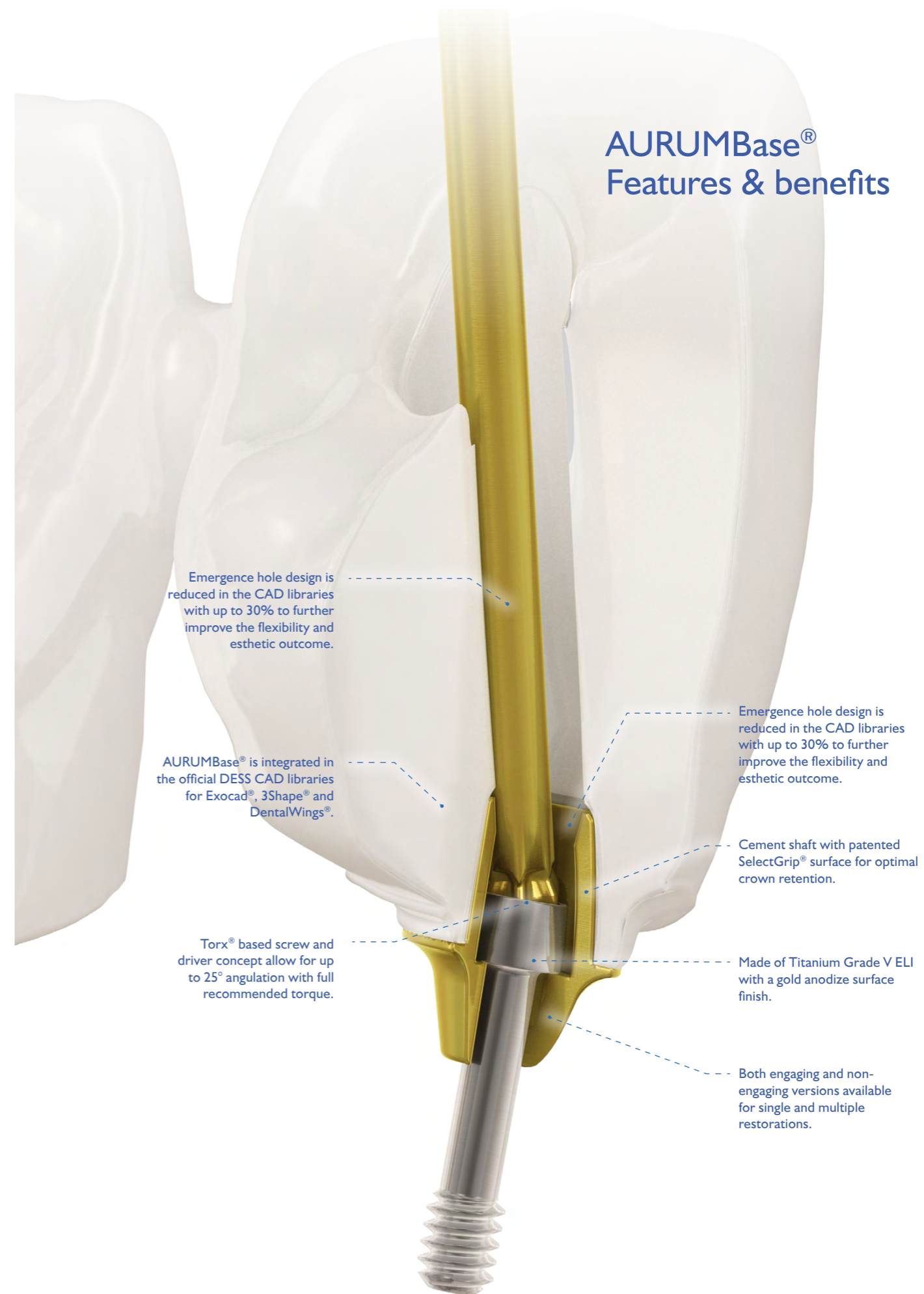
Angulated Ti Bases (AURUMBase)					
Reference No.	Implant Ø (mm)	Gingiva height (mm)	Screw		
<b>NARROW</b>	CP 36.041	3,3; 3,75	1,2	CP 19.441 TORX	<span style="color: yellow;">●</span>
					<span style="color: orange;">●</span>
<b>REGULAR</b>	CP 36.042	4,2; 4,8	1,2	CP 19.442 TORX	<span style="color: yellow;">●</span>
					<span style="color: orange;">●</span>



Plastic sleeves for Angulated Ti Bases (AURUMBase)					
Reference No.	Implant Ø (mm)	Height (mm)	Degree	Info	
CP 33.100-P5	3,3; 3,75; 4,2; 4,8	10,5	0°	Pack of 5	<span style="color: yellow;">●</span>
CP 33.101-P5	3,3; 3,75; 4,2; 4,8	10,5	10°	Pack of 5	<span style="color: yellow;">●</span>
CP 33.102-P5	3,3; 3,75; 4,2; 4,8	10,5	20°	Pack of 5	<span style="color: yellow;">●</span>



## AURUMBase® Features & benefits



Emergence hole design is reduced in the CAD libraries with up to 30% to further improve the flexibility and esthetic outcome.

AURUMBase® is integrated in the official DESS CAD libraries for Exocad®, 3Shape® and DentalWings®.

Emergence hole design is reduced in the CAD libraries with up to 30% to further improve the flexibility and esthetic outcome.

Cement shaft with patented SelectGrip® surface for optimal crown retention.

Torx® based screw and driver concept allow for up to 25° angulation with full recommended torque.

Made of Titanium Grade V ELI with a gold anodize surface finish.

Both engaging and non-engaging versions available for single and multiple restorations.

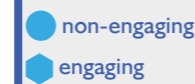
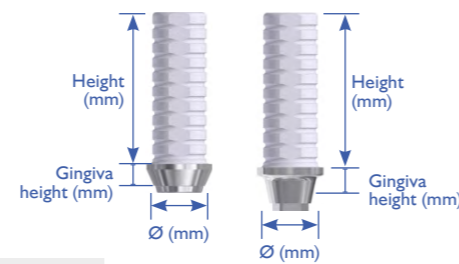


## TEMPORARY ABUTMENTS

### Titanium Temporary Abutments

Medical Grade 5 ELI Titanium / ASTM F136 Standards

SelectGrip® surface improves retention.  
Includes final prosthetic titanium screw.

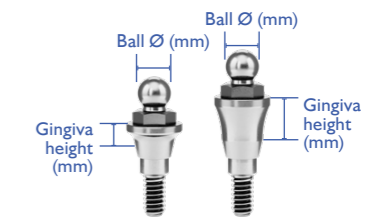


Titanium Temporary Abutments								
Reference No.	Implant Ø (mm)	Height (mm)	Gingiva height (mm)	Ø (mm)	Screw			
NARROW	CP 24.041	3,3; 3,75	10,5	1,5	4,5	CP I9.027		
	CP 25.041	3,3; 3,75	10,5	1,5	4,5	CP I9.027		
REGULAR	CP 24.042	4,2; 4,8	10,5	1,5	4,9	CP I9.030		
	CP 25.042	4,2; 4,8	10,5	1,5	4,9	CP I9.030		

## Ball abutments

Medical Grade 5 ELI Titanium / ASTM F136 Standards

OT-Cap compatible



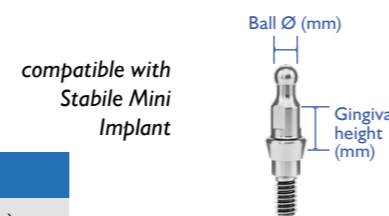
Ball abutments			
Reference No.	Implant Ø (mm)	Gingiva height (mm)	Ball Ø (mm)
NARROW	CP 89.039/1	3,3; 3,75	1,5
	CP 89.039/2	3,3; 3,75	2,5
	CP 89.039/3	3,3; 3,75	3,5
	CP 89.039/4	3,3; 3,75	4,5
REGULAR	CP 89.040/1	4,2; 4,8	1,5
	CP 89.040/2	4,2; 4,8	2,5
	CP 89.040/3	4,2; 4,8	3,5
	CP 89.040/4	4,2; 4,8	4,5



## REMOVABLE ABUTMENTS

### Mini Ball abutments

Medical Grade 5 ELI Titanium / ASTM F136 Standards



Ball abutments			
Reference No.	Implant Ø (mm)	Gingiva height (mm)	Ball Ø (mm)
NARROW	CP 89.139/1	3,3; 3,75	1,0
	CP 89.139/2	3,3; 3,75	2,0
	CP 89.139/3	3,3; 3,75	3,0
	CP 89.139/4	3,3; 3,75	4,0
	CP 89.139/5	3,3; 3,75	5,0
REGULAR	CP 89.140/1	4,2; 4,8	1,0
	CP 89.140/2	4,2; 4,8	2,0
	CP 89.140/3	4,2; 4,8	3,0
	CP 89.140/4	4,2; 4,8	4,0
	CP 89.140/5	4,2; 4,8	5,0



## Accessories

OT-Cap retaining cap

OT-Cap	
Reference No.	
3000-880	OT-Cap retaining cap standard
3000-881	OT-Cap metal housing
3000-882	OT-Cap retaining cap soft
3000-883	OT-Cap retaining cap hard
3000-884	OT-Cap retaining cap extra hard



# Dess Loc

## Loc

Coated with Zirconia Nitride which increases hardness of the abutment surface and decreases plaque formation versus traditional titanium nitride or no coating at all. Use your existing instruments, inserts or metal housings. Retention processing kit sold separately.



DESS LOC compatible with LOCATOR®

Dess Loc compatible with LOCATOR				
Reference No.	Implant Ø (mm)	Height (mm)	Gingiva height (mm)	
NARROW	CP 88.039/1	3,3; 3,75	3,0	1,0
	CP 88.039/2	3,3; 3,75	4,0	2,0
	CP 88.039/3	3,3; 3,75	5,0	3,0
	CP 88.039/4	3,3; 3,75	6,0	4,0
	CP 88.039/5	3,3; 3,75	7,0	5,0
	CP 88.039/6	3,3; 3,75	8,0	6,0
REGULAR	CP 88.040/1	4,2; 4,8	3,0	1,0
	CP 88.040/2	4,2; 4,8	4,0	2,0
	CP 88.040/3	4,2; 4,8	5,0	3,0
	CP 88.040/4	4,2; 4,8	6,0	4,0
	CP 88.040/5	4,2; 4,8	7,0	5,0
	CP 88.040/6	4,2; 4,8	8,0	6,0



# DESS Loc Accessories

DESS Loc Accessories			
Reference No.	Implant Ø (mm)	Name	Info
CP 14.054	3,3; 3,75; 4,2; 4,8	Analogue	
CP 17.054	3,3; 3,75; 4,2; 4,8	Transfer	For closed tray only, made of POM
DLRK-P1	3,3; 3,75; 4,2; 4,8	Retention kit	up to 20°divergence between implants x1
DLRK-P2	3,3; 3,75; 4,2; 4,8	Retention kit	up to 20°divergence between implants x2
DLER-P1	3,3; 3,75; 4,2; 4,8	Retention kit	up to 40°divergence between implants x1
DLER-P2	3,3; 3,75; 4,2; 4,8	Retention kit	up to 40°divergence between implants x2
DLN2-P4	3,3; 3,75; 4,2; 4,8	Males	up to 20°divergence between implants 1.5 lbs/680 g x4
DLN3-P4	3,3; 3,75; 4,2; 4,8	Males	"up to 20°divergence between implants 3 lbs/1300 g x4"
DLN4-P4	3,3; 3,75; 4,2; 4,8	Males	"up to 20°divergence between implants 5 lbs/2270 g x4"
DLNI-P4	3,3; 3,75; 4,2; 4,8	Males	"up to 40°divergence between implants 1 lbs/450 g x4"
DLN6-P4	3,3; 3,75; 4,2; 4,8	Males	"up to 40°divergence between implants 2 lbs/910 g x4"
DLN7-P4	3,3; 3,75; 4,2; 4,8	Males	"up to 40°divergence between implants 4 lbs/1810 g x4"





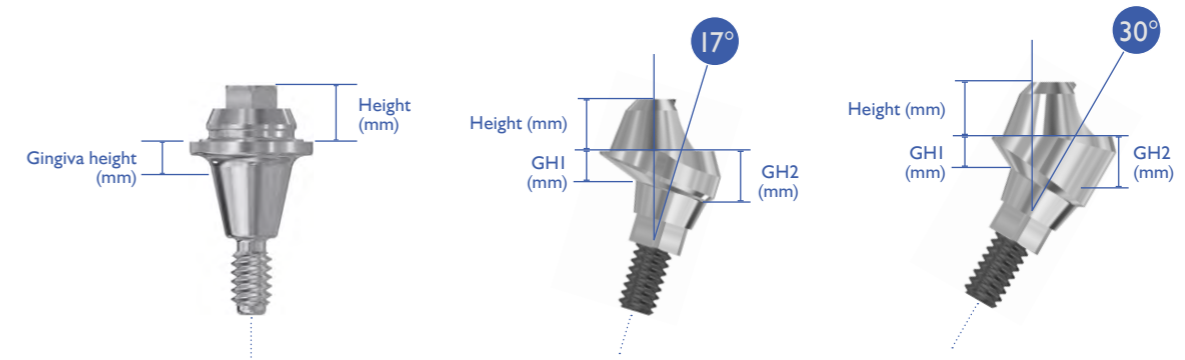
# MULTI-UNIT ABUTMENTS

## Multi-unit Abutments

Medical Grade 5 ELI Titanium /  
ASTM F136 Standards

Multi-unit screws, impression transfers, Ti-bases,  
titanium and plastic castable abutments are available.  
Angeled Multi-units include DLC Screw

- non-engaging
- ◈ engaging



Multi-Unit Abutments									
Reference No.	Implant Ø (mm)	Height (mm)	Gingiva height (mm)	GHI - Gingiva height 1 (mm)	GH2 - Gingiva height 2 (mm)	Ø (mm)	Degree		
CP 40.007/1	3,3; 3,75	2,2	1,5	-	-	4,8	0	●	
CP 40.007/2	3,3; 3,75	2,2	2,5	-	-	4,8	0	●	
CP 40.007/3	3,3; 3,75	2,2	3,5	-	-	4,8	0	●	
CP 41.707/2	3,3; 3,75	2,2	-	1,1	2,5	4,8	17	◈	
CP 41.707/3	3,3; 3,75	2,2	-	2,1	3,5	4,8	17	◈	
CP 43.007/3	3,3; 3,75	2,2	-	1,1	3,5	4,8	30	◈	
CP 43.007/4	3,3; 3,75	2,2	-	2,1	4,5	4,8	30	◈	
CP 40.008/1	4,2; 4,8	2,2	1,5	-	-	4,8	0	●	
CP 40.008/2	4,2; 4,8	2,2	2,5	-	-	4,8	0	●	
CP 40.008/3	4,2; 4,8	2,2	3,5	-	-	4,8	0	●	
CP 40.008/4	4,2; 4,8	2,2	4,5	-	-	4,8	0	●	
CP 41.708/2	4,2; 4,8	2,2	-	2,1	2,5	4,8	17	◈	
CP 41.708/3	4,2; 4,8	2,2	-	1,1	3,5	4,8	17	◈	
CP 43.008/3	4,2; 4,8	2,2	-	1,1	3,5	4,8	30	◈	
CP 43.008/4	4,2; 4,8	2,2	-	2,1	4,5	4,8	30	◈	

## Multi-unit Accessories

Multi-Unit Accessories						
Reference No.	Implant Ø (mm)	Name	Height (mm)	Gingiva height (mm)	Screw	Info
CP 14.007	3,3; 3,75; 4,2; 4,8	Analogue				
CP 17.007	3,3; 3,75; 4,2; 4,8	Transfer	12			For both, open and closed tray
CP 17.807	3,3; 3,75; 4,2; 4,8	Transfer	8			For closed tray only
CP 24.007	3,3; 3,75; 4,2; 4,8	Temporary abutment	12		CP 19.006	
CP 20.100	3,3; 3,75; 4,2; 4,8	Healing abutment	4,15			
CP 28.007	3,3; 3,75; 4,2; 4,8	Castable	11,5		CP 19.006	
CP 88.007	3,3; 3,75; 4,2; 4,8	Dess LOC	4,3			
CP 50.007	3,3; 3,75; 4,2; 4,8	Scan abutment	16		CP 19.006	For desktop scanning; max. Torque: 10 Ncm
CP 52.007	3,3; 3,75; 4,2; 4,8	Scan abutment	7,5			For intra-oral scanning
15.007	3,3; 3,75; 4,2; 4,8	Titanium Base	6	0,3	CP 19.006	
CP 32.007	3,3; 3,75; 4,2; 4,8	Titanium Base-Castable			Pack of 5	
CP 30.007	3,3; 3,75; 4,2; 4,8	Chrome Cobalt	12		CP 19.006	
CP 36.007	3,3; 3,75; 4,2; 4,8	Dess AURUMBase	5		CP 19.306 TORX screw	



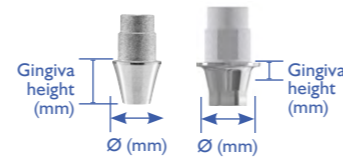
# DIGITAL LABORATORY ACCESSORIES

## Titanium Bases

Medical Grade 5 ELI Titanium / ASTM F136 Standards

SelectGrip® surface improves retention.  
Includes wax up sleeve and final prosthetic screw.  
Anti rotational flat side and retentive grooves for greater stability.

- non-engaging
- ⬡ engaging



Titanium Bases					
Reference No.	Implant Ø (mm)	Gingiva height (mm)	Ø (mm)	Screw	
NARROW	CP 15.041	3,3; 3,75	1,2	4,5	CP 19.027 ●
	CP 15.341	3,3; 3,75	3,0	4,5	CP 19.027 ●
	CP 16.041	3,3; 3,75	1,2	4,5	CP 19.027 ⬡
	CP 16.341	3,3; 3,75	3,0	4,5	CP 19.027 ⬡
REGULAR	CP 15.042	4,2; 4,8	1,2	4,9	CP 19.030 ●
	CP 15.342	4,2; 4,8	3,0	4,9	CP 19.030 ●
	CP 16.042	4,2; 4,8	1,2	4,9	CP 19.030 ⬡
	CP 16.342	4,2; 4,8	3,0	4,9	CP 19.030 ⬡



Castables for Titanium Bases				
Reference No.	Implant Ø (mm)	Height (mm)	Info	
R N	CP 32.001-P5	3,3; 3,75; 4,2; 4,8	11	Pack of 5 ●
	CP 33.001-P5	3,3; 3,75; 4,2; 4,8	11	Pack of 5 ⬡

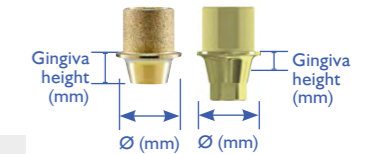


## Angulated Ti Bases (AURUMBase)

Medical Grade 5 ELI Titanium / ASTM F136 Standards

Gold anodized with SelectGrip® surface improves retention.  
Includes final prosthetic Torx™ based screw.  
Up to 25° angulation.  
One Torx™ screw driver for entire system - available in 20-24-35mm lengths.

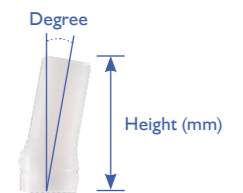
- non-engaging
- ⬡ engaging



Angulated Ti Bases (AURUMBase)				
Reference No.	Implant Ø (mm)	Gingiva height (mm)	Screw	
NARROW	CP 36.041	3,3; 3,75	1,2	CP 19.441 TORX ●
	CP 37.041	3,3; 3,75	1,2	CP 19.441 TORX ⬡
REGULAR	CP 36.042	4,2; 4,8	1,2	CP 19.442 TORX ●
	CP 37.042	4,2; 4,8	1,2	CP 19.442 TORX ⬡



Plastic sleeves for Angulated Ti Bases (AURUMBase)					
Reference No.	Implant Ø (mm)	Height (mm)	Degree	Info	
R N	CP 33.100-P5	3,3; 3,75; 4,2; 4,8	10,5	0°	Pack of 5 ●
	CP 33.101-P5	3,3; 3,75; 4,2; 4,8	10,5	10°	Pack of 5 ●
	CP 33.102-P5	3,3; 3,75; 4,2; 4,8	10,5	20°	Pack of 5 ●





## Dental lab and intraoral scan bodies

Lab scan body is designed in cooperation with Exocdd® (Library free for Exocad, 3Shape and Dws) For lab scan bodies, fixation screw is sold separately. Intraoral scan bodies are constructed with hidden fixation screw. Only 4mm in diameter for an optimal intraoral use.

Dental lab and intraoral scan bodies				
Reference No.	Implant Ø (mm)	Height (mm)	Screw	Info
<b>NARROW</b>	<b>CP 50.041</b>	3,3; 3,75	14	CP 19.027 <b>For desktop scanning</b>
	<b>CP 52.041</b>	3,3; 3,75	7,5	<b>For intraoral scanning; max. Torque: 10 Ncm</b>
<b>REGULAR</b>	<b>CP 50.042</b>	4,2; 4,8	14	CP 19.030 <b>For desktop scanning</b>
	<b>CP 52.042</b>	4,2; 4,8	7,5	<b>For intraoral scanning; max. Torque: 10 Ncm</b>



## LABOR ANALOGUES / SCREWS

### Analogues

#### Surgical Stainless Steel AISI-303

Includes both open and closed tray screw. Stainless steel analogs are more accurate and stronger than other inferior materials (aluminum) and are tested for tolerance and fit to ensure accuracy with original implant. Can be used as a Digital Implant Model Analog. Free digital analog library files for Exocad, 3Shape, and Dental Wings.

Angulated Ti Bases (AURUMBASE)	
Reference No.	Implant Ø (mm)
<b>N</b> <b>CP 14.041</b>	3,3; 3,75
<b>R</b> <b>CP 14.042</b>	4,2; 4,8



### Screws

*Recommended final torque: 30Ncm.  
Stress tested up to 120% of their nominal torques.*

Prosthetic screws			
Reference No.	Implant Ø (mm)	Screw Ø (mm)	Info
<b>NARROW</b>	<b>CP 19.027</b>	3,3; 3,75	Fixation screw
	<b>CP 19.227</b>	3,3; 3,75	MI.6 Fixation screw DLC coated
	<b>CP 19.441</b>	3,3; 3,75	Fixation screw TORX for angulate screw channel for DESS AURUMBase
<b>REGULAR</b>	<b>CP 19.030</b>	4,2; 4,8	Fixation screw
	<b>CP 19.230</b>	4,2; 4,8	M2.0 Fixation screw DLC coated
	<b>CP 19.442</b>	4,2; 4,8	Fixation screw TORX for angulate screw channel for DESS AURUMBase



*Recommended final torque: 15Ncm.*

Screws for Multi-Unit Accessories		
Reference No.	Implant Ø (mm)	Info
<b>R</b> <b>CP 19.006</b>	3,3; 3,75; 4,2; 4,8	Screw UG without DLC
<b>N</b> <b>CP 19.206</b>	3,3; 3,75; 4,2; 4,8	Screw UG with DLC
<b>R</b> <b>CP 19.306</b>	3,3; 3,75; 4,2; 4,8	Screw TORX for DESS AURUMBase



# GINGIVA FORMERS & IMPRESSION TAKINGS

## Healing Abutments - Standard line

Medical Grade 5 ELI Titanium / ASTM F136 Standards

Same screwdriver is used as the original implant system.  
VI: shallow conical, V2: deep conical.



Healing abutments

Reference No.	CP NNIL5	CP NRIL3	CP NRIL5	CP NR2L5	CP NR2L7	CP NWIL5
Implant Ø (mm)	3,3; 3,75	3,3; 3,75	3,3; 3,75	3,3; 3,75	3,3; 3,75	3,3; 3,75
Platform	SLIM	NORMAL	NORMAL	NORMAL	NORMAL	WIDE
Height(mm)	5	3	5	5	7	5
Ø (mm)	3,8	4,9	4,9	4,9	4,9	5,8
	VI	VI	VI	V2	V2	VI

NARROW



Healing abutments

Reference No.	CP RNIL5	CP RRIL3	CP RRIL5	CP RR2L5	CP RR2L7	CP RWIL5
Implant Ø (mm)	4,2; 4,8	4,2; 4,8	4,2; 4,8	4,2; 4,8	4,2; 4,8	4,2; 4,8
Platform	SLIM	NORMAL	NORMAL	NORMAL	NORMAL	WIDE
Height(mm)	5	3	5	5	7	5
Ø (mm)	4,9	5,8	5,8	5,8	5,8	6,6
	VI	VI	VI	V2	V2	VI

REGULAR

## Impression Transfers

Surgical Stainless Steel AISI-303. Only for impression taking!



Impression coping - CLOSED TRAY

Reference No.	CP TNNI	CP TNRI	CP TNR2	CP TNWI
Implant Ø (mm)	3,3; 3,75	3,3; 3,75	3,3; 3,75	3,3; 3,75
Screw	CP 19.027	CP 19.027	CP 19.027	CP 19.027
Height(mm)	11,5	11,5	11,5	11,5
Ø (mm)	3,8	4,9	4,9	5,8

NARROW



Impression coping - CLOSED TRAY

Reference No.	CP TRNI	CP TRRI	CP TRR2	CP TRWI
Implant Ø (mm)	4,2; 4,8	4,2; 4,8	4,2; 4,8	4,2; 4,8
Screw	CP 19.030	CP 19.030	CP 19.030	CP 19.030
Height(mm)	11,5	11,5	11,5	11,5
Ø (mm)	4,9	5,8	5,8	6,6

REGULAR



Impression coping - OPEN TRAY

Reference No.	CP TONNI	CP TONRI	CP TONR2	CPTONWI
Implant Ø (mm)	3,3; 3,75	3,3; 3,75	3,3; 3,75	3,3; 3,75
Screw	CP TONS	CP TONS	CP TONS	CP TONS
Height(mm)	10	10	10	10
Ø (mm)	3,8	4,9	4,9	5,8

NARROW



Impression coping - OPEN TRAY

Reference No.	CP TORNI	CP TORRI	CP TORR2	CPTORWI
Implant Ø (mm)	4,2; 4,8	4,2; 4,8	4,2; 4,8	4,2; 4,8
Screw	CP TORS	CP TORS	CP TORS	CP TORS
Height(mm)	10	10	10	10
Ø (mm)	4,9	5,8	5,8	6,6

REGULAR

Only for impression taking!



Impression coping - CONICAL + CAP			
<b>Reference No.</b>	CP TCNRIS	CP TCNRIN	CP TCNR2N
<b>Implant Ø (mm)</b>	3,3; 3,75	3,3; 3,75	3,3; 3,75
<b>Screw</b>	CP 19.027	CP 19.027	CP 19.027
<b>Height(mm)</b>	9,5	11,5	11,5
<b>Ø (mm)</b>	4,9	4,9	4,9
	SHORT	NORMAL	NORMAL

NARROW

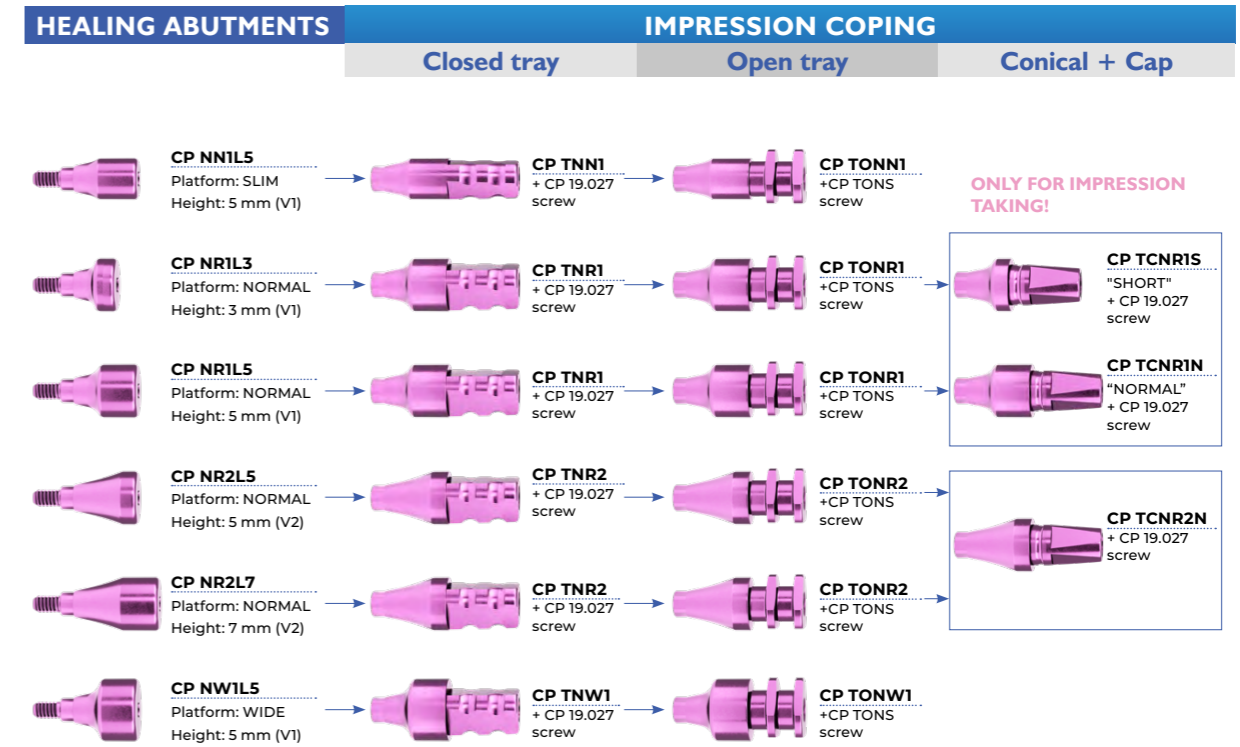


Impression coping - CONICAL + CAP			
<b>Reference No.</b>	CP TCRRIS	CP TCRRIN	CP TCRR2N
<b>Implant Ø (mm)</b>	4,2; 4,8	4,2; 4,8	4,2; 4,8
<b>Screw</b>	CP 19.030	CP 19.030	CP 19.030
<b>Height(mm)</b>	9,5	11,5	11,5
<b>Ø (mm)</b>	5,8	5,8	5,8
	SHORT	NORMAL	NORMAL

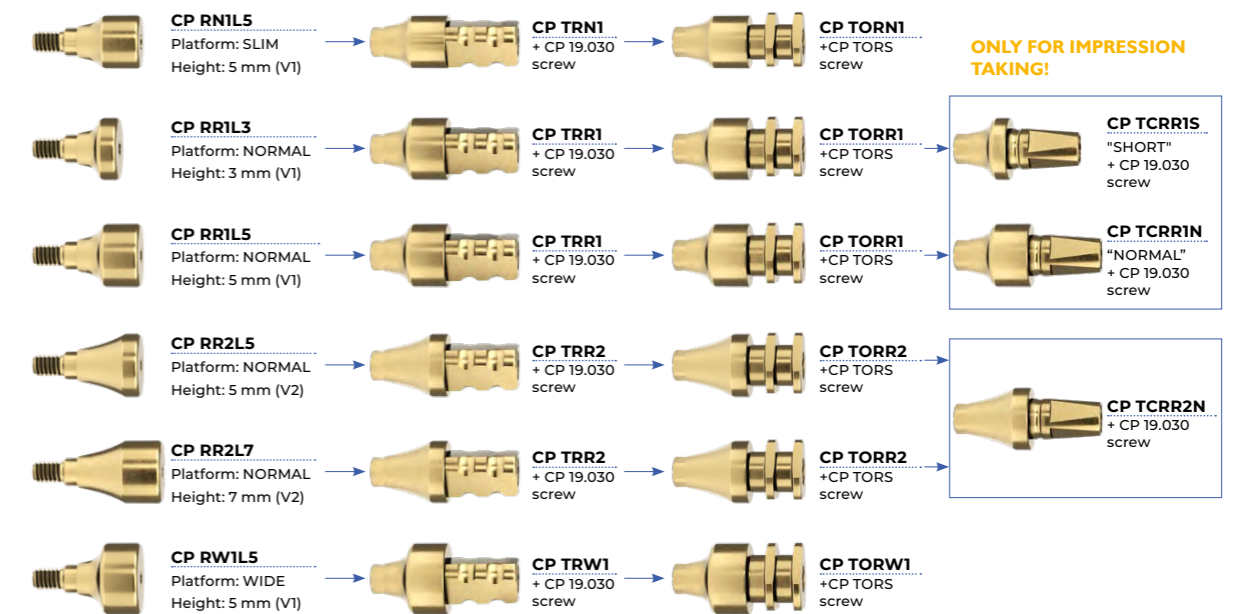
REGULAR

Only for impression taking!

The following figure shows the healing abutments and their associated impression copings.



V1: Shallow conical  
V2: Deep conical





# SURGICAL TRAY

## Surgical instruments

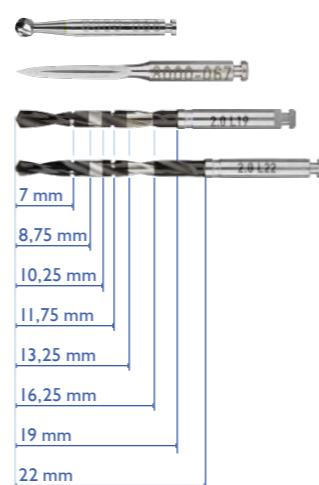
Surgical instruments are produced in Germany with the highest standards of quality.

### Marker & Pilot drills

Marker & Pilot drills				
Reference No.	Implant Ø (mm)	Name	Length (mm)	
<b>8000-066</b>	3,3; 3,75; 4,2; 4,8	Spherical drill		
<b>8000-067</b>	3,3; 3,75; 4,2; 4,8	Initial drill		
<b>CP 2mmS</b>	3,3; 3,75; 4,2; 4,8	Pilot drill	19	
<b>CP 2mmL</b>	3,3; 3,75; 4,2; 4,8	Pilot drill	22	

### Pilot drills

Used for optional pilot drilling, or pilot guide surgery. Works best with coDiagnostiX (Dental Wings).



### Core drills

Smooth running: step drill, 3 cutting blades. Long lasting and clear length visibility (DLC surface).  
Guide ready: step by step leading tip. Easy to use: optional snap on drill stops (coming soon).

Core drills				
Reference No.	Implant Ø (mm)	Name	Colour code	
<b>CD-1</b>	3,3; 3,75; 4,2; 4,8	1 CORE DRILL 2.0/2.3	No colour code	
<b>CD-2</b>	3,3	2 CORE DRILL 2.3/2.85	Grey	
<b>CD-3</b>	3,75	3 CORE DRILL 2.8/3.3	Purple	
<b>CD-4</b>	4,2	4 CORE DRILL 3.25/3.7	Yellow	
<b>CD-5</b>	4,8	5 CORE DRILL 3.65/4.35	Blue	



### Cortical drills

Cortical drills are designed, to provide compression free cervical closure.

Cortical drills				
Reference No.	Implant Ø (mm)	Name	Colour code	
<b>C3,3</b>	3,3	CORTICAL DRILL	Grey	
<b>C3,75</b>	3,75	CORTICAL DRILL	Purple	
<b>C4,2</b>	4,2	CORTICAL DRILL	Yellow	
<b>C4,8</b>	4,8	CORTICAL DRILL	Blue	



Implant driver

Implant body drivers. PEEK ring for stable implant mounting. Protects the implant connection by increased contact surface.

Implant drivers				
Reference No.	Implant Ø (mm)	Name	Length (mm)	
<b>ID-Ns</b>	3,3; 3,75	IMPLANT DRIVER	29	Narrow short
<b>ID-NL</b>	3,3; 3,75	IMPLANT DRIVER	35	Narrow long
<b>ID-Rs</b>	4,2; 4,8	IMPLANT DRIVER	29	Regular short
<b>ID-RL</b>	4,2; 4,8	IMPLANT DRIVER	35	Regular long



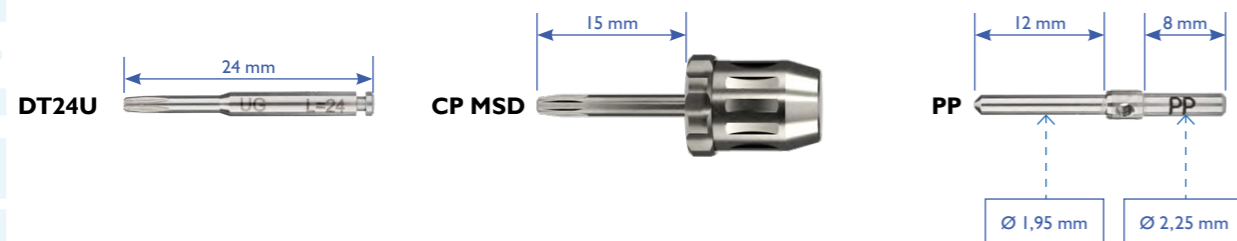
Tools

Standard tools		
Reference No.	Implant Ø (mm)	Name
<b>8000-057</b>	3,3; 3,75; 4,2; 4,8	DRILL EXTENDER
<b>DT24U</b>	3,3; 3,75; 4,2; 4,8	SCREW DRIVER
<b>CP MSD</b>	3,3; 3,75; 4,2; 4,8	MANUAL SCREW DRIVER
<b>PP</b>	3,3; 3,75; 4,2; 4,8	PARALLEL PIN
<b>GSLEEVE</b>	3,3; 3,75; 4,2; 4,8	PILOT SLEEVE



Pilot sleeve

Used for optional pilot drilling, or pilot guide surgery. Works best with coDiagnostix (Dental Wings).



Ratchet with continuous torque measurement 10-30-50-70 Ncm

The most popular „bending arm” design in new one piece form for the highest standards of hygiene. Fits conventional 7mm adapters.

Ratchet - surgical kit			
Reference No.	Implant Ø (mm)		
<b>1000600</b> <b>8000-143</b>	3,3; 3,75; 4,2; 4,8	ratchet	with continuous torque measurement 10-30-50-70 Ncm

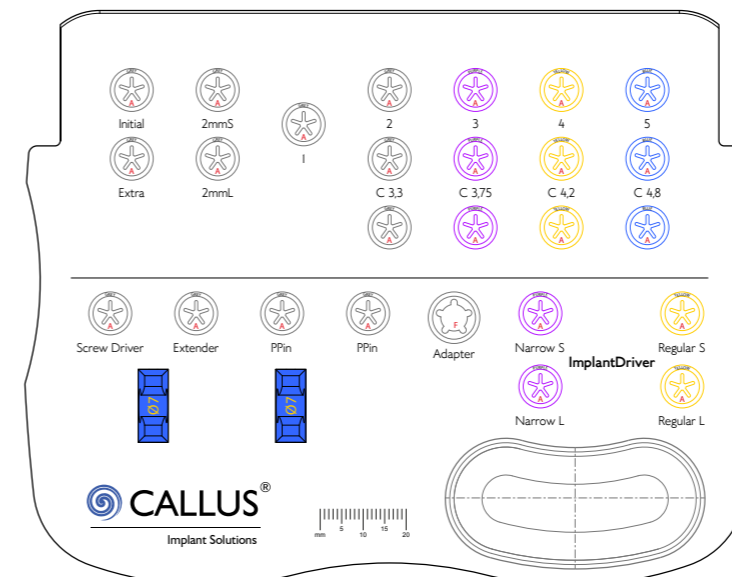


Reference No.	Implant Ø (mm)		
<b>1000274</b>	3,3; 3,75; 4,2; 4,8	adapter	for both WH hex- and RA connection



Surgical tray

To store and sterilise surgical instruments. Logical layout for easy surgery. Storage for extra accessories, or hidration /mixing of grafting materials.





# PROSTHETIC TRAY

## Prosthetic instruments

### Prosthetic drivers

Prosthetic drivers					
Reference No.	Implant Ø (mm)		Length (mm)		
DT20U	3,3; 3,75; 4,2; 4,8	SCREW DRIVER	20	straight short	
DT24U	3,3; 3,75; 4,2; 4,8	SCREW DRIVER	24	straight medium	
DT35U	3,3; 3,75; 4,2; 4,8	SCREW DRIVER	35	straight long	
DT20TB06	3,3; 3,75; 4,2; 4,8	SCREW DRIVER	20	angled screw channel SHORT	OPTIONAL
DT24TB06	3,3; 3,75; 4,2; 4,8	SCREW DRIVER	24	angled screw channel MEDIUM	TRAY INCLUDES
DT35TB06	3,3; 3,75; 4,2; 4,8	SCREW DRIVER	35	angled screw channel LONG	OPTIONAL
TMU	3,3; 3,75; 4,2; 4,8	DRIVER FOR MULTI UNIT		abutments RA	
TLOC	3,3; 3,75; 4,2; 4,8	DRIVER FOR DESS LOC		abutments RA	



Ratchet - prosthetic kit				
Reference No.	Implant Ø (mm)			
1000900-F	3,3; 3,75; 4,2; 4,8	ratchet	continous torque measurement 15-35-50 Ncm	



Reference No.	Implant Ø (mm)		
1000235 1000274	3,3; 3,75; 4,2; 4,8	adapter	for RA connection



### Prosthetic tools

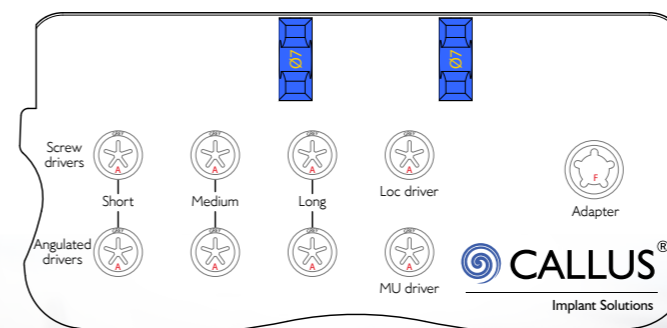
Laboratory accessories		
Reference No.	Implant Ø (mm)	
PHLAB	3,3; 3,75; 4,2; 4,8	PREMIUM laboratory handle
PHLOC	3,3; 3,75; 4,2; 4,8	DESS LOC Removal and Insertion Tool



PHLAB PHLOC

### Prosthetic tray

To store and sterilise prosthetic instruments. Logical layout for prothetic procedure. Different length of instruments available.







Implant Solutions



**Callus Implant Solutions**

Adlerstraße 34,  
90403 Nürnberg  
Germany

[WWW.CALLUSIMPLANTS.COM](http://WWW.CALLUSIMPLANTS.COM)

[info@callusimplants.com](mailto:info@callusimplants.com)

+36 30 229 8798